



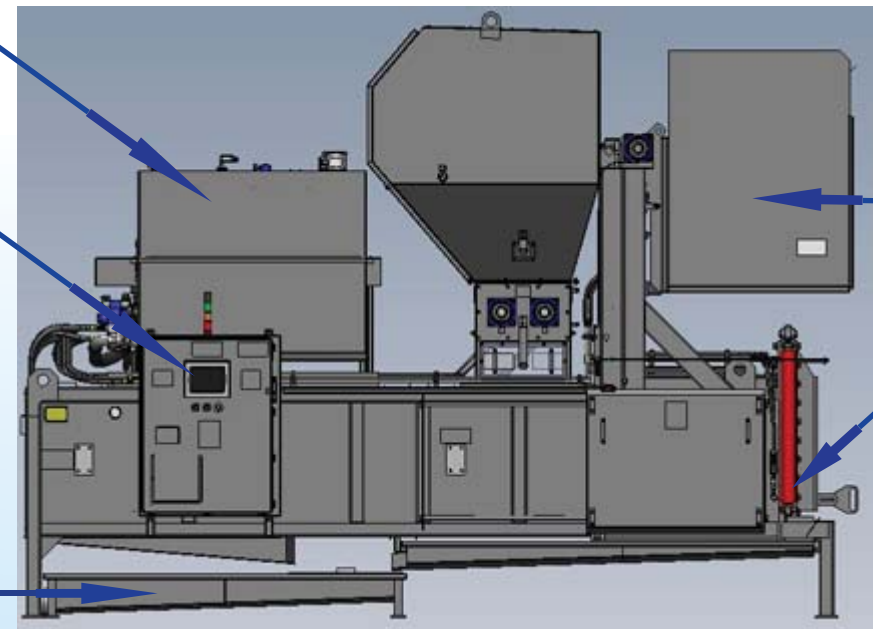
X³Cycler System

Simple & efficient for a full range of applications

- Process plastic & aluminum containers
- Process up to 30 cu. yards per hour
- Container volume reductions of up to 95%
- Clean sealed design contains liquids

STAINLESS STEEL HYDRAULIC TANK

AB 10 INCH TOUCH SCREEN



240 GALLON SUMP

CART TIPPER UP TO 48 X 48 X 48 CART

HYDRAULICALLY OPERATED VERTICAL BALER DOOR FOR SAVING FLOOR SPACE

Finally, a machine that can do it all. The X³Cycler is the answer for processing large volumes of full plastic or aluminum liquid containers. It dumps, perforates, dewater, crushes, and bales in one compact and integrated system. We leveraged our 20+ years experience in hydraulic Liquids/Solids Separation Technology in the design of this system. Large 35 cubic foot bales, high thru-put and corrosion resistant stainless steel construction make this equipment a winner!

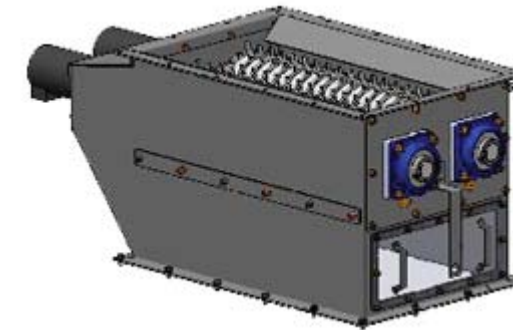
The cart tipper is designed to accept Gaylords or plastic totes of containers of up to 2.0 cubic yard capacity and cycles in under one minute including an automatic cart rinse cycle while inverted in the hopper!

The Complete X³cycler System (Tipper, Perforator & Baler) cycles in about 2 minutes! You will not be waiting for the X³Cycler, it will be waiting for you. With two 8" bore hydraulic cylinders the X³Cycler develops up to 250,000 lbs. of force to drive the liquids out and insure optimum bale density.

Concerns about cleanliness? The X³Cycler contains & channels liquid to where it belongs. No Runs, No Drips, No Errors!

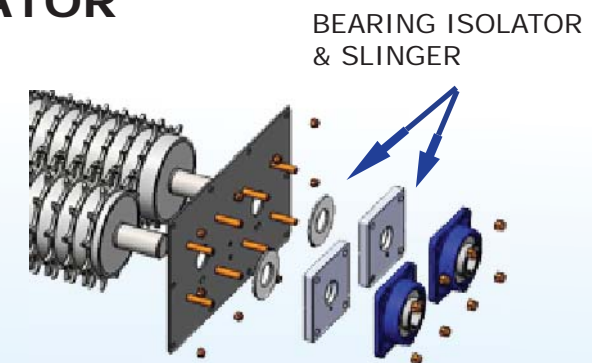


X³Cycler Components



CONTAINER PERFORATOR

- Stainless steel construction
- Dual Hydraulic motor direct drive
- Rugged 3/8" thick SS teeth
- Bearing isolators (better seal of liquids)
- Removable polycarbonate viewing windows



FEATURES

- Stainless steel construction
- 230 Gallon SS liquid collection pan
- UL listed NEMA 4x plc control panel
- Category 3 safety interlocks
- Allen Bradley electrical controls
- Upgraded 10 inch color touch screen

Safety Features

- Cat 3 bale chamber splash guards
- Cat 3 rope pull tipper & door perimeter
- Redundant main motor contactors
- Deadman type bale eject control
- Bale door dead bolt (up position)

Space Saving Design

- Tipper loads and bale ejects to same area
- Vertical lift chamber end door
- Sliding splash covers
- Deck mounted hydraulic unit

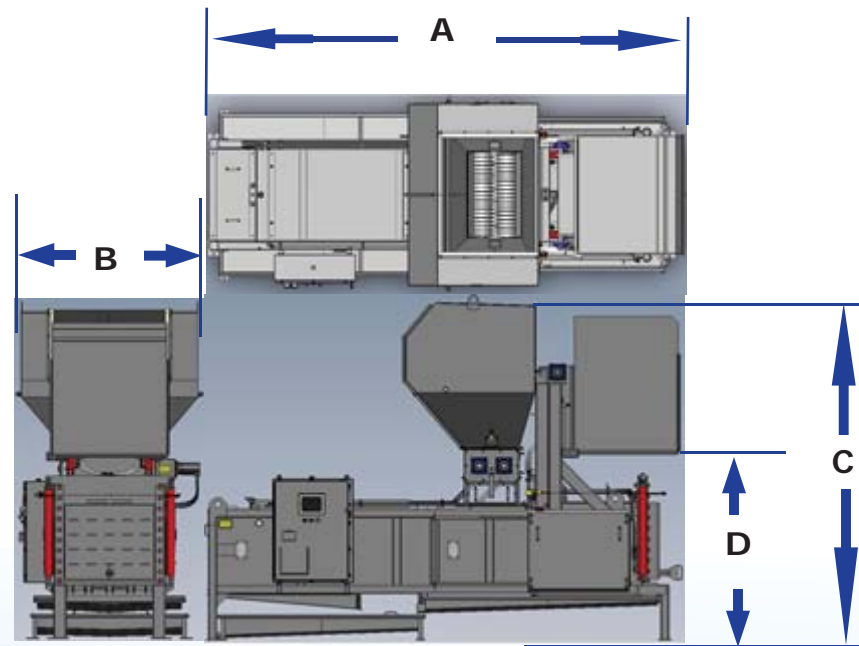
Hydraulic Power Unit

- Pressure compensated pump
- Oil cooler (with over temp fault)
- Independent tipper vane pump
- Desiccant air breather
- Dirty filter sensor and fault
- Oil spill pan with drain

X³Cycler Specifications



X³Cycler



ALUMINUM BALE



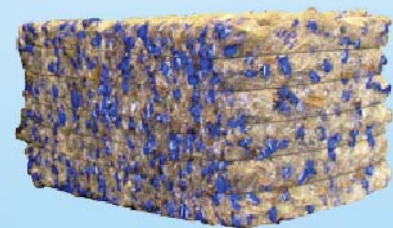
PET BALE

Perforate, Crush & Bale Liquid Containers in One Clean Operation

- Stainless steel construction
- Compact space saving design
- Spray shields keep liquids off your floors
- Process UP to 1200 lbs per hour PET Bottles



Hot Fill PET Bale



X³Cycler System Info

O.A. Length "A"	222"
O.A. Width "B"	85"
O.A. Height "C"	155"*
Tipper Height "D"	85"
Dry Weight (Tons)	13
Liquid Capacity (Gal)	240
Cycle Time (Sec.)	120**

Electrical	
Motor	30HP
Power	230/460V 3PH
Amps	80 / 40
PLC Type	AB MicroLogix 1400
HMI Type	AB 10 Inch PanelView
Safety Circuit	CAT 3
Main Enclosure	4X SS
Approvals	UL Listed Main Panel

* Requires 16 Foot Clearance for Tipper
** Cycle Time varies with Application

Recommended Floor Space
30'L X 15'W

Bale Dimensions
42"W X 30"H X 32-48"L*
*Operator Adjustable Bale Length

Tipper Information
Accepts Several Types of Rectangular Container such as Gaylord Boxes, Totes, Etc...
Cart Max. Dimensions
48"W X 48"H X 48"L

Hydraulic	
Main Pump	47 GPM Piston
Tipper Pump	5 GPM Vane
Hyd. Pressure	2500 Max.
Ram Cylinders	(2) 8" X 82"
Tipper Cylinders	(2) 3" X 23"
Ram Force	250,000 LBS (Max)
Ram Cycle	100 Seconds
Tipper Cycle	58 Seconds*
Complete Cycle	~120 Seconds
*Includes Automatic Cart Rinse Cycle	

BALE WEIGHTS **	
	UP TO
PET BOTTLES	900 LBS
ALUMINUM CANS	800 LBS
** Bale weights are approximate and may vary by application and container size.	

Due to product improvement, the manufacturer reserves the right to alter or amend, without notice, any of these specifications and/or dimensions

Bright Technologies, a division of Sebright Products, Inc.
127 N. Water St., PO BOX 296
Hopkins MI 49328
Phone: 269.793.7183 Fax: 269.793.4022
Toll Free US: 800-253-0532

